

# OPEN & SHUT?

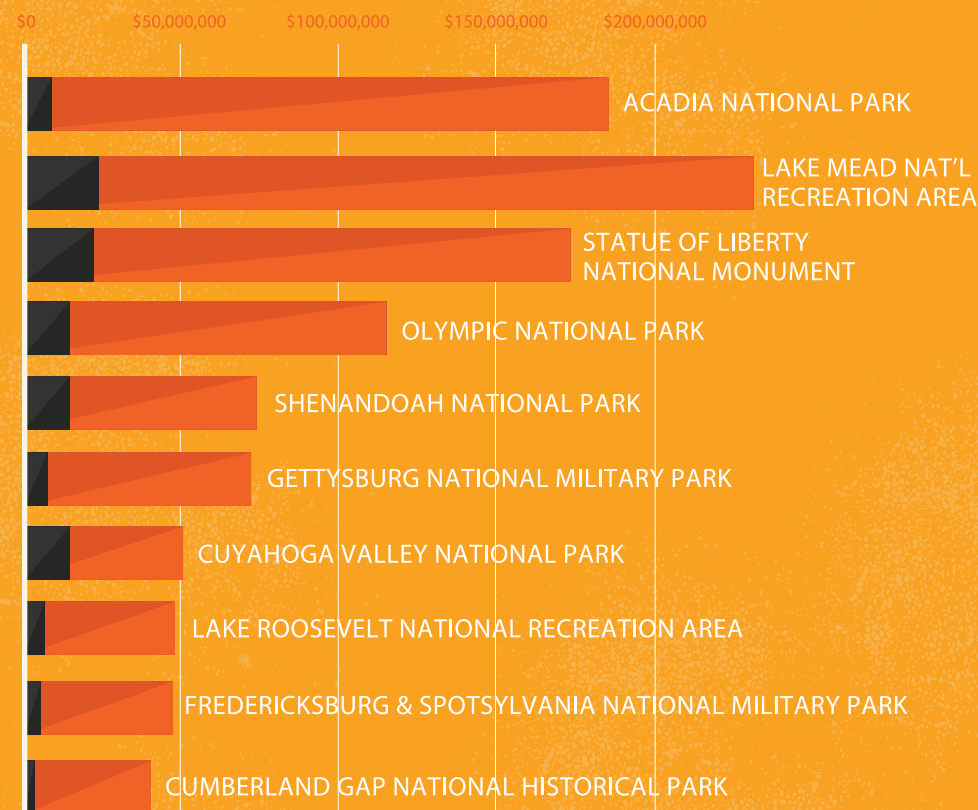
## NATIONAL PARKS FUNDING 2014

OVER THE COURSE OF THE 16-DAY FEDERAL GOVERNMENT SHUTDOWN, NATIONAL PARK CLOSURES DOMINATED THE HEADLINES, WITH STORIES FROM DISAPPOINTED VISITORS AND HUNDREDS OF HOTELS, RESTAURANTS, AND STORES LOSING BUSINESS. THE DOORS TO EVERY NATIONAL PARK ARE NOW BACK OPEN, BUT IF PARK FUNDING CONTINUES ON ITS CURRENT COURSE, THOSE DOORS WILL CLOSE A FEW DAYS A WEEK, MORE SCHOOL PROGRAMS WILL BE CANCELLED, AND MUCH-NEEDED REPAIRS WILL BE NEGLECTED. AS CONGRESS BEGINS 2014 BUDGET NEGOTIATIONS, A FEW FACTS AND FIGURES THAT REVEAL WHAT'S AT STAKE.

LEARN MORE AT

[WWW.NPCA.ORG/FUNDING](http://WWW.NPCA.ORG/FUNDING)

# ECONOMIC IMPACT RELATIVE TO COST



2011 POSITIVE ECONOMIC IMPACT ON THE REGION  
2012 ENACTED BUDGET



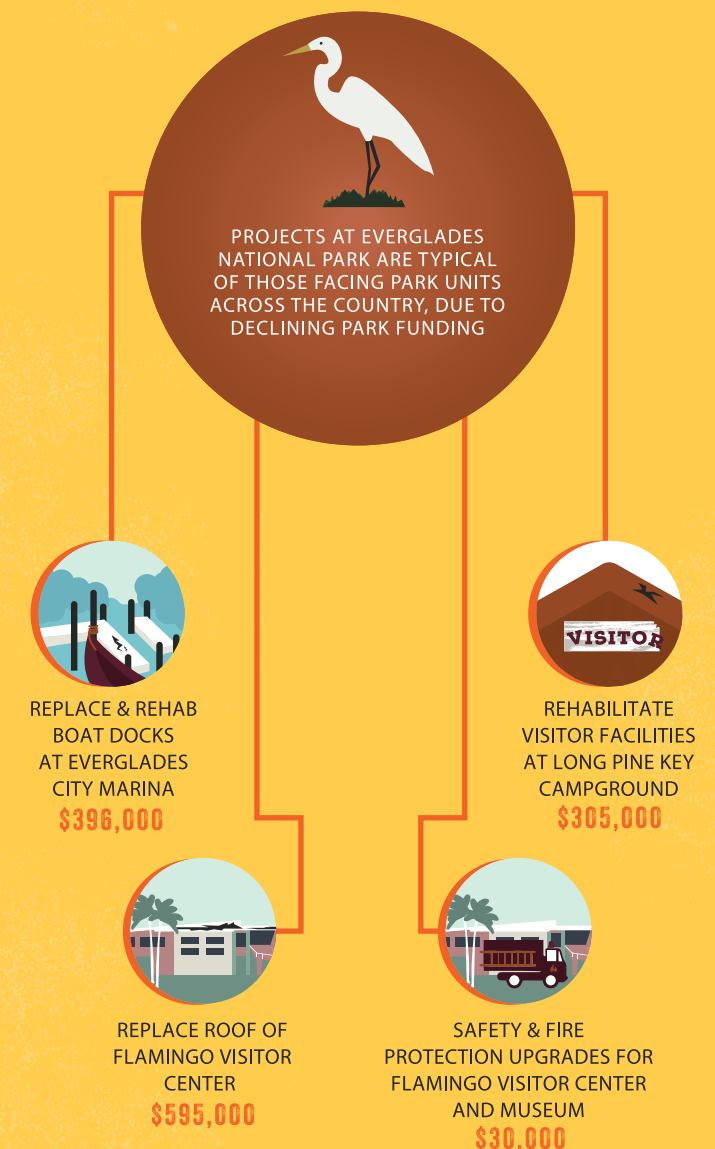
## IN MAINE, OUR GEM OF A NATIONAL PARK, ACADIA

IS SHUTTERED DURING THE PEAK OF THE FOLIAGE SEASON. THIS NOT ONLY DISAPPOINTS TOURISTS, IT HURTS THE INNKEEPERS, BED AND BREAKFAST OWNERS, SERVERS AT RESTAURANTS, AND THE SMALL GIFT SHOP ENTREPRENEURS WHO DEPEND ON THESE TOURISTS DURING THIS TIME OF YEAR. SENATOR SUSAN COLLINS (R-ME)

THE MAIN INDUSTRY IN CHINCOTEAGUE IS TOURISM, (AND) THE CLOSURE OF THE NATIONAL SEASHORE... HAS COMPLETELY HAMMERED THE COMMUNITY OF CHINCOTEAGUE. SENATOR TIM KAINE (D-VA)

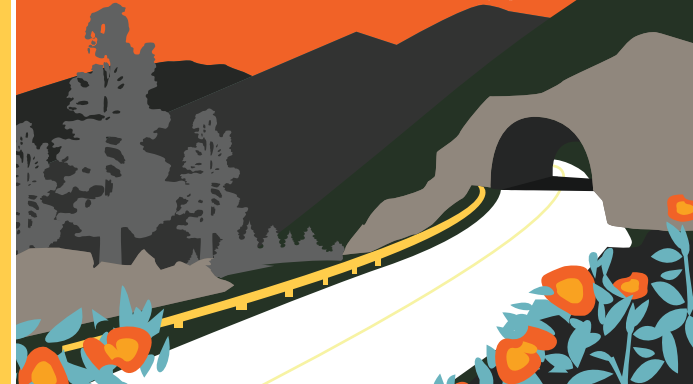
# EVERGLADES

## THE \$80M TO-DO LIST



IT'S LIKE CLOSING A SHOPPING MALL AT CHRISTMAS TIME. IT'S THE TIME OF YEAR WHERE YOU EITHER MAKE IT, OR DON'T MAKE IT.

PHIL FRANCIS  
FORMER SUPERINTENDENT OF BLUE RIDGE PARKWAY  
QUOTED BY THE HUFFINGTON POST REGARDING THE IMPACT OF THE FEDERAL GOVERNMENT SHUTDOWN ON REGIONAL TOURISM



BLUE RIDGE PARKWAY RECEIVES MORE VISITORS IN OCTOBER THAN ANY OTHER NATIONAL PARK, WITH

60,000 VISITORS SPENDING \$1.4 MILLION EACH DAY.

THE AVERAGE AMERICAN HOUSEHOLD PAYS

\$2.56 IN TAXES EACH YEAR FOR OUR NATIONAL PARKS, A LITTLE MORE THAN

A CUP OF COFFEE AT STARBUCKS



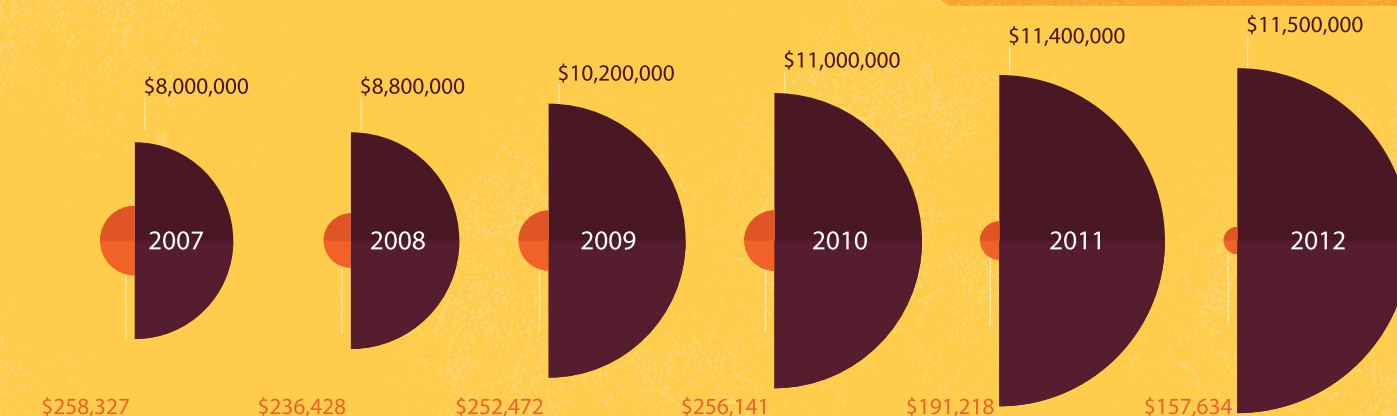
SOURCES:  
Blue Ridge Now, Bureau of Labor Statistics, Huffington Post, Michigan State University, National Parks Traveler, NPS, Public Opinion Strategies, Sen. Susan Collins, Sen. Tim Kaine, Third Way, U.S. Census Bureau

NATIONAL PARKS CONSERVATION ASSOCIATION

# NO COINCIDENCE

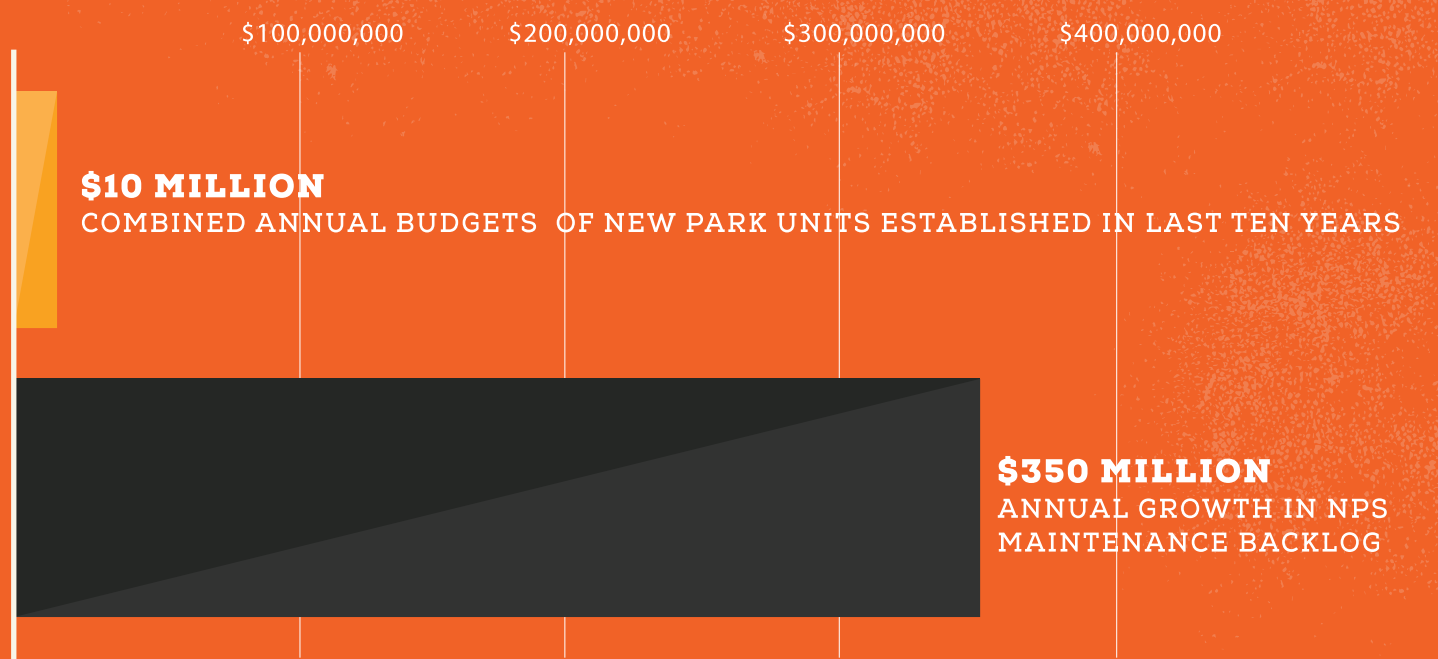
AS CONGRESS CUTS THE PARK CONSTRUCTION BUDGET, NEGLECTED MAINTENANCE PROJECTS BALLOON.

DECLINING CONSTRUCTION BUDGET ADJUSTED FOR INFLATION, IN THOUSANDS  
GROWING MAINTENANCE BACKLOG IN THOUSANDS



# NEW PARKS? NOT THE PROBLEM

IN RECENT MONTHS, SOME MEMBERS OF CONGRESS HAVE SUGGESTED NO LONGER DESIGNATING NEW NATIONAL PARK UNITS IN ORDER TO REDUCE THE ENTIRE NATIONAL PARK SERVICE MAINTENANCE BACKLOG. AS YOU CAN SEE, THE NEW PARK UNITS INCLUDING FLIGHT 93 AND AFRICAN BURIAL GROUND NATIONAL MONUMENT COST RELATIVELY LITTLE, AND ELIMINATING THEM WOULD NOT ADDRESS THE RISING BACKLOG. THESE NEW, IMPORTANT SITES TELL AMERICA'S SHARED HISTORY.



89% OF MONTANA BUSINESS OWNERS SURVEYED SAID NATIONAL PARKS, FORESTS AND WILDLIFE ARE AN ESSENTIAL PART OF MONTANA'S ECONOMY

NATIONAL PARKS ARE A TINY AND DECLINING PART OF THE FEDERAL BUDGET. IF YOU ELIMINATED THE ENTIRE NPS BUDGET IT WOULD TAKE ABOUT 6,000 YEARS TO ELIMINATE THE DEBT.

DENY GALVIN  
RETIRED DEPUTY DIRECTOR, NATIONAL PARK SERVICE