



# CLEAN AIR 4 PARKS

## CALIFORNIA'S NATIONAL PARKS



**"Yosemite is not as isolated as I thought it was... You think that we're secluded, but what really surprised me is the amount of pollution that does make its way from the Central Valley into the park."**

**— John DeGrazio**  
Founder, YExplore  
Yosemite Adventures

**Top:** Haze shrouds Sequoia National Park  
©Mark Rose **Above:** Visitor at Joshua  
Tree National Park ©Ian Shive



## The Struggle For Clean Air

*With hazy, unhealthy skies, California's national parks rank highest in the nation among parks harmed by air pollution. Your voice can help change that.*

Persistent air pollution brings obscured views and harmful air to Sequoia, Kings Canyon, Yosemite, and Joshua Tree National Parks. While factors like intermittent forest fires contribute to air quality problems at these parks, they are not the sole culprits—numerous human-caused sources of fine particulate matter (PM<sub>2.5</sub>) and ozone contribute to the problem as well.

Agencies like the California Air Resources Board (CARB) and San Joaquin Valley

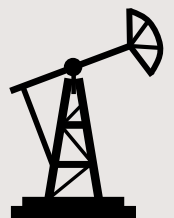
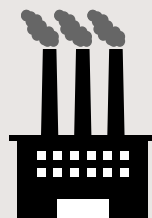
Air Pollution Control District (SJVAPCD) have the primary responsibility to limit these sources of pollution. Cleaning them up would be a significant step toward ending the chronic air quality issues facing our parks and communities.

Join NPCA as we urge CARB, SJVAPCD, and other California decision-makers to fulfill their duties and require common-sense solutions to protect people and parks.

## Solving the Clean Air Crisis

Many sources contribute to air pollution, and it'll take teamwork to clean things up. Here are solutions that CARB and SJVAPCD should employ:

- Limit tailpipe emissions from **vehicles** like cars and trucks
- Tighten controls of **diesel emissions** from agriculture and industry
- Prohibit or significantly reduce **burning of agricultural waste**
- Cut emissions from **dairy and livestock** operations
- Strengthen controls on commercial **charbroiler equipment** and residential **wood burning**
- Reduce pollution from **oil and gas** operations
- Curtail emissions from **industrial biomass** facilities



# Seeing Clearly

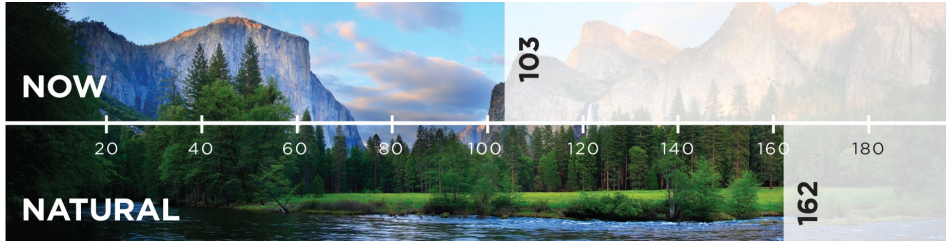
Visitors hoping for unspoiled long-range views in the Sierra Nevada all too often encounter disappointingly hazy skies. Haze is made up of particulate matter and light-blocking gases that reduces our ability to see features like mountains in the distance. California's national parks are some of the haziest in the country. For instance, visitors to Sequoia and Kings Canyon National Parks regularly miss out on over 90 miles of stunning views.

## Sequoia and Kings Canyon National Parks

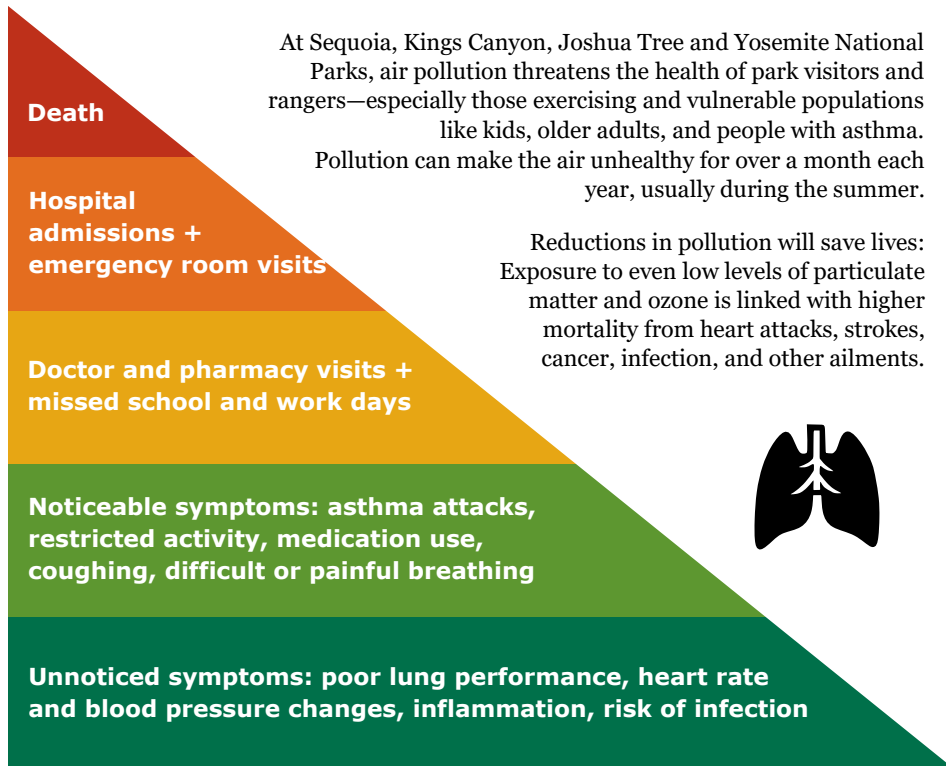
Average Visibility in Miles



## Yosemite National Park



# Preventing Health Impacts



Number of people affected →

# Plants & Animals

Air pollution can be harmful to plant life, stifling growth and interfering with essential biological functions like photosynthesis.

According to researchers at University of California Merced and Riverside, air pollution may be a significant driving force in the ongoing tree mortality crisis devastating the Sierra Nevada mountains.

In addition, air pollution can lead to excess deposition of nitrogen. Too much nitrogen alters natural ecosystem functions, bringing about abnormal changes in plant and aquatic life.

In Joshua Tree, excess nitrogen is linked to a rise in invasive grasses, increasing the risk of wildfires. At Sequoia and Kings Canyon, high nitrogen levels are responsible for harmful algae growth in high altitude lakes.



Top left: Sequoia/Kings Canyon ©Jeffrey Pang; Yosemite ©Kateleigh Above: Joshua Tree ©Nathan Miller

## YOU CAN HELP.

Contact the California Air Resources Board and the San Joaquin Valley Air Pollution Control District at <http://bit.ly/ValleyAirFeedback>, and ask for swift implementation of the PM2.5 plan in 2019. To learn more, visit [npca.org/advocacy/80-california-national-parks-struggling-for-clean-air](http://npca.org/advocacy/80-california-national-parks-struggling-for-clean-air) or contact:

**Mark Rose**  
Sierra Nevada  
Field Representative  
[mrose@npca.org](mailto:mrose@npca.org)

