



REGIONAL HAZE FACTSHEET

ILLINOIS

CLEARING THE AIR

Air pollution remains one of the most serious problems facing national parks. It is threatening the health of park visitors, wildlife and neighboring communities, driving the climate crisis and compromising our views with hazy skies. In fact, nearly 90 percent of our more than 400 national parks are plagued by haze pollution caused mostly by coal plants, vehicles and other industrial sources, as well as oil and gas development and operations.

Fortunately, certain national parks and wilderness areas, labeled “Class I” areas, have the strongest clean air protections in the country, mandated by the Clean Air Act (CAA). The Regional Haze Rule is the CAA’s time-tested, effective program that requires federal and state agencies as well as stakeholders to work together to restore clear skies at Class I areas around the country. While Illinois does not have its own Class I areas, pollution from the state still affects air quality at special outdoor areas like Garden of the Gods in the Shawnee National Forest and harms areas outside of the state.

In order to meet this requirement, Illinois must submit its plan to the Environmental Protection Agency (EPA) by July 2021 specifying the pollution reducing measures it will require to make progress towards natural visibility.



18

Industrial facilities in Illinois potentially affecting visibility in 27 regional Class I Areas.

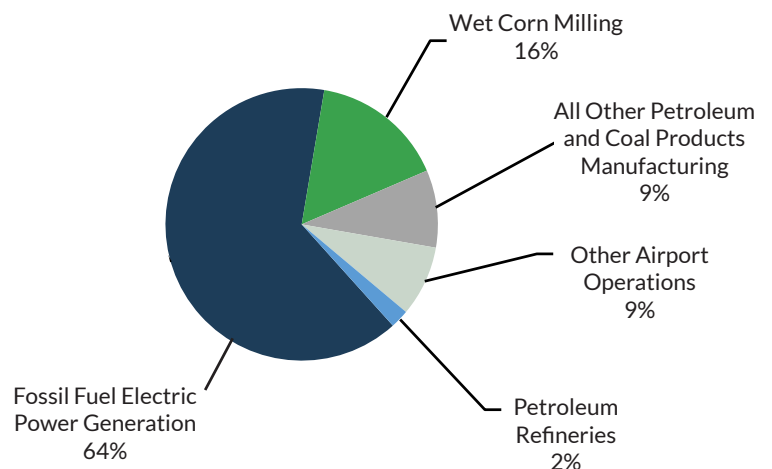
View of Garden of the Gods in Shawnee National Forest, Illinois. Credit © Curtis Abert | Flickr.com.

NPCA analysis of impact of industrial facilities based on publicly available emissions data from the EPA’s 2017 National Emissions Inventory (NEI) and the 2019 Air Markets Program Data (AMPD).

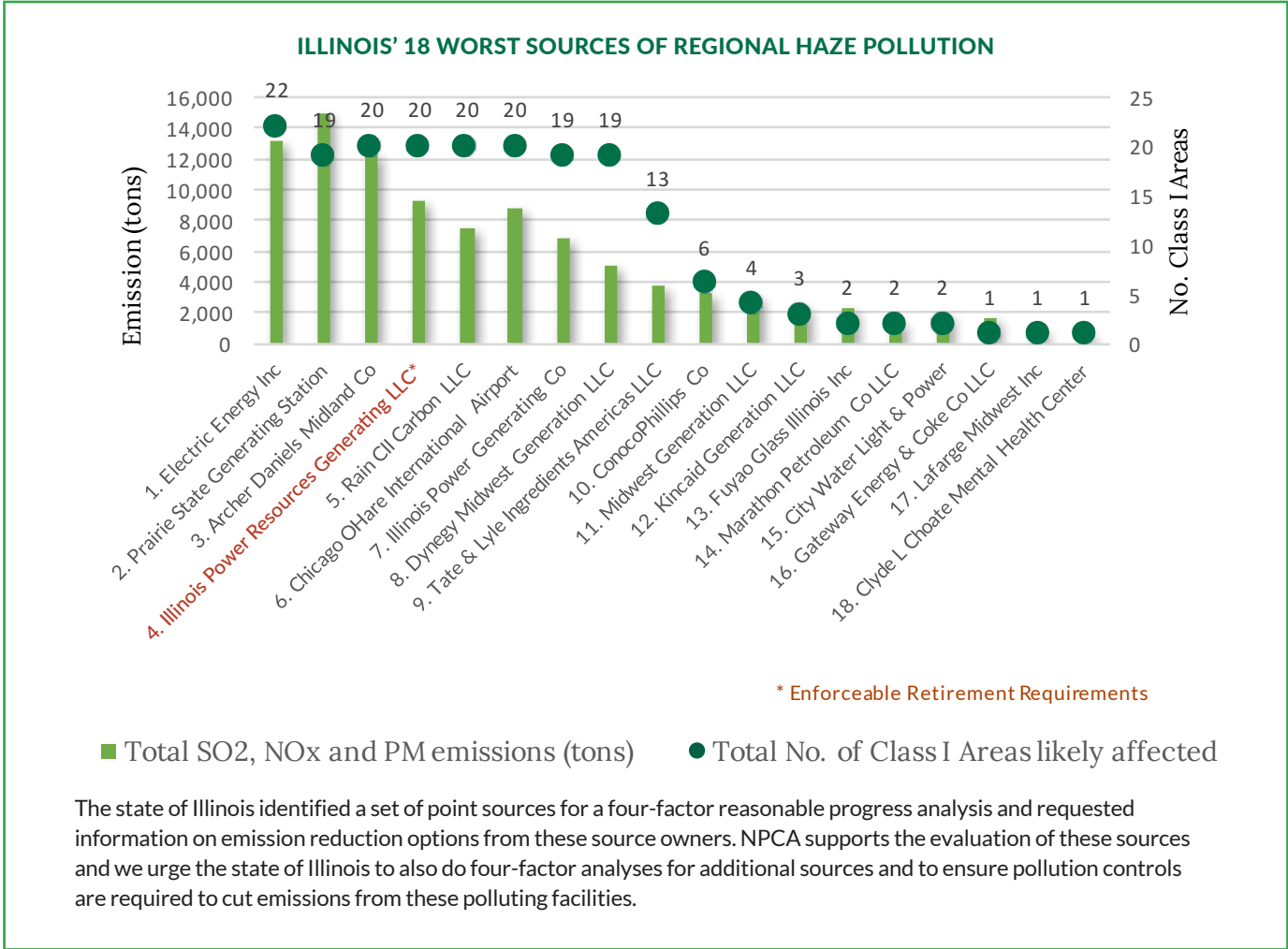
ILLINOIS’ INDUSTRIAL SECTORS OF HAZE POLLUTION

NPCA analyzed publicly available data to identify the worst sources and industrial sectors of haze pollution potentially affecting Class I Areas. We evaluated these emitters to determine which sources should be selected by the state for a four-factor reasonable progress analysis.

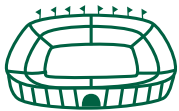
The chart on the right shows the industrial sectors emitting the most visibility impairing pollution in STATE.



Sources of Visibility Impairing Pollution in Illinois

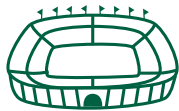


HOW MANY FOOTBALL STADIUMS (8 STORIES HIGH) COULD EACH OF THE TOP FIVE INDUSTRIAL FACILITIES IN ILLINOIS FILL WITH THEIR EMISSIONS EACH YEAR?



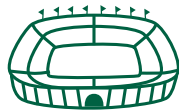
53

Electric Energy Inc
Massac County
13,134 tons



59

Prairie State
Generating Station
Washington County
14,867 tons



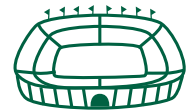
49

Archer Daniels
Midland Co
Macon County
12,289 tons



37

Illinois Power Resources
Generating LLC
Peoria County
9,272 tons



30

Rain CII Carbon LLC
Crawford County
7,439 tons

TAKE ACTION: We have an opportunity to achieve a regional haze plan for Illinois that protects people, parks, and our future. Please join our effort to ensure that all decision-makers and stakeholders, at the federal, state, and municipal level work to make this happen.

For more information, please contact Christine Goepfert at cgoepfert@npca.org.