



REGIONAL HAZE FACTSHEET

ARKANSAS

CLEARING THE AIR

Air pollution remains one of the most serious problems facing national parks. It is threatening the health of park visitors, wildlife and neighboring communities, driving the climate crisis and compromising our views with hazy skies. In fact, nearly 90 percent of our more than 400 national parks are plagued by haze pollution caused mostly by coal plants, vehicles and other industrial sources, as well as oil and gas development and operations.

Fortunately, certain national parks and wilderness areas, labeled “Class I” areas, have the strongest clean air protections in the country, mandated by the Clean Air Act (CAA). The Regional Haze Rule is the CAA’s time-tested, effective program that requires federal and state agencies as well as stakeholders to work together to restore clear skies at Class I areas around the country. In Arkansas those places include Caney Creek and Upper Buffalo Wilderness Areas.

Arkansas has submitted its regional haze plan to the Environmental Protection Agency (EPA). The plan outlines what pollution reductions the state will require from industrial facilities, if any. EPA must now decide to approve, partially approve, or disapprove the plan.



16

Industrial facilities in Arkansas potentially affecting visibility in 16 regional Class I Areas.



187

Industrial facilities from any state potentially affecting visibility in Arkansas's 2 Class I Areas.

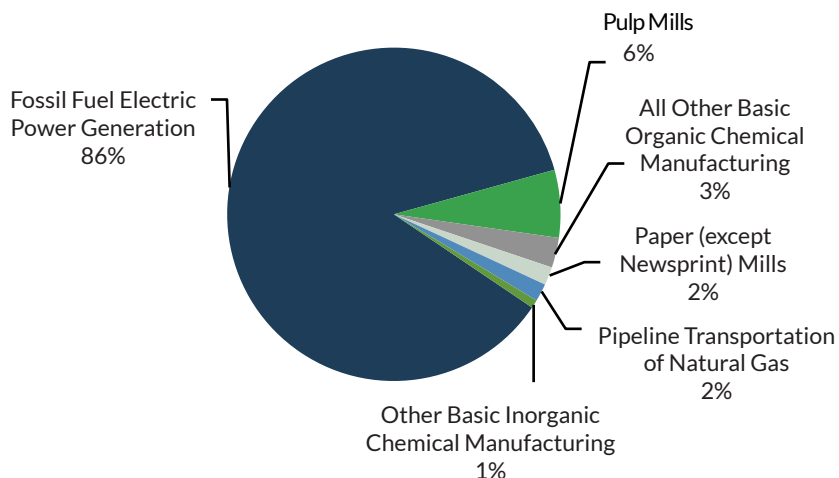
Views of the Upper Buffalo River and Wilderness Area in Arkansas. Credit © Wilderness.net.

NPCA analysis of impact of industrial facilities based on publicly available emissions data from the EPA's 2017 National Emissions Inventory (NEI) and the 2019 Air Markets Program Data (AMPD). Note that data regarding emission numbers and sources of pollution may have changed since the creation of this fact sheet. Please contact dorozco@npca.org for updated data information.

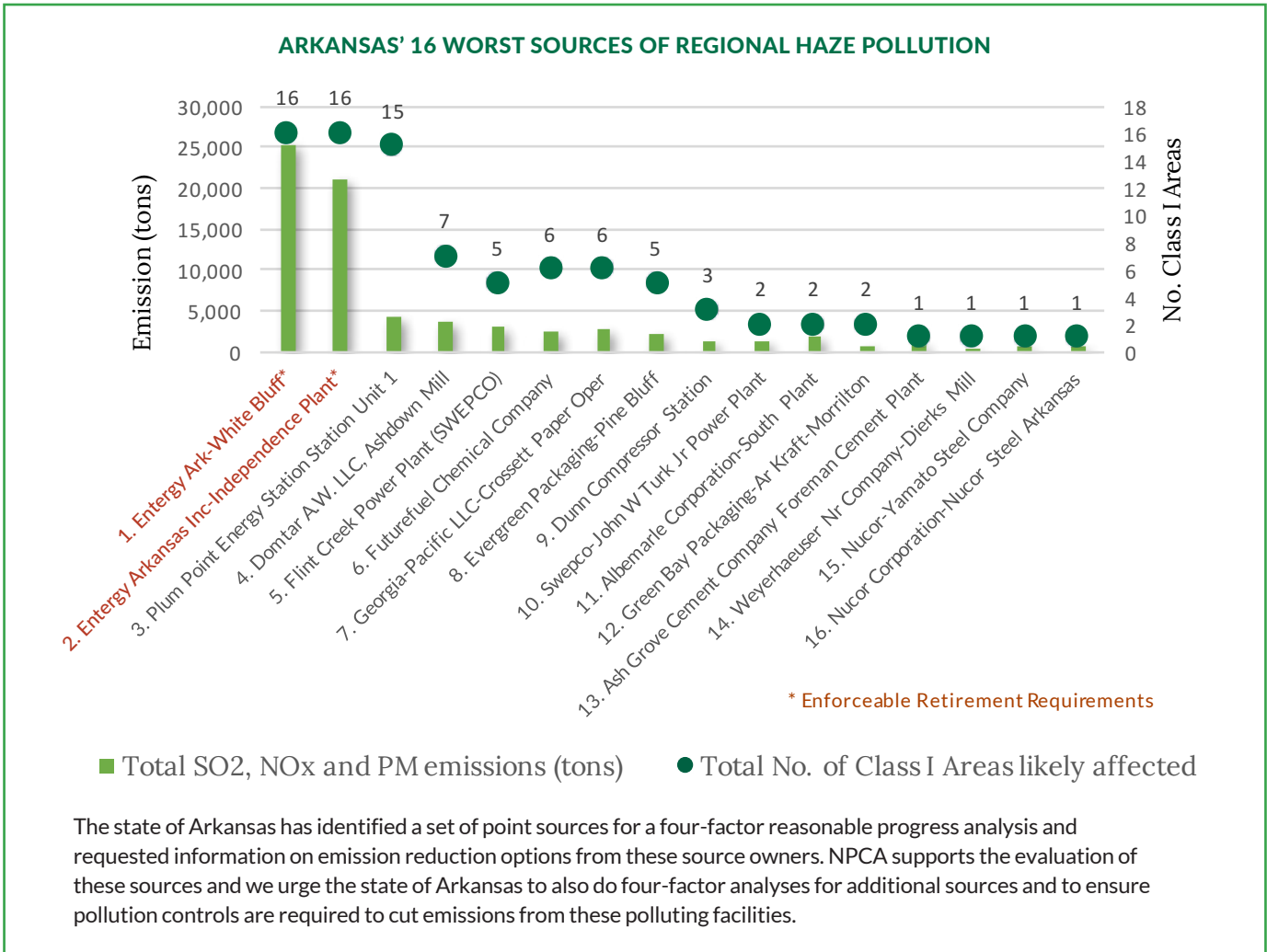
ARKANSAS' INDUSTRIAL SECTORS OF HAZE POLLUTION

NPCA analyzed publicly available data to identify the worst sources and industrial sectors of haze pollution potentially affecting Class I Areas. We evaluated these emitters to determine which sources should be selected by the state for a four-factor reasonable progress analysis.

The chart on the right shows the industrial sectors emitting the most visibility impairing pollution in Arkansas.



Sources of Visibility Impairing Pollution in Arkansas

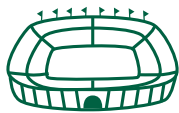


HOW MANY FOOTBALL STADIUMS (8 STORIES HIGH) COULD EACH OF THE TOP FIVE INDUSTRIAL FACILITIES IN ARKANSAS FILL WITH THEIR EMISSIONS EACH YEAR?



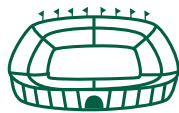
101

Entergy Ark-White Bluff
Jefferson County
25,278 tons



84

Entergy Arkansas Inc-Independence Plant
Independence County
20,921 tons



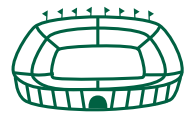
17

Plum Point Energy Station Unit 1
Mississippi County
4,341 tons



15

Domtar A.W. LLC, Ashdown Mill
Little River County
3,795 tons



12

Flint Creek Power Plant (SWEPCO)
Benton County
3,109 tons

TAKE ACTION: We have an opportunity to achieve a regional haze plan for STATE that protects people, parks, and our future. Please join our effort to ensure that all decision-makers and stakeholders, at the federal, state, and municipal level work to make this happen.

For more information, please contact Natalie Levine at nlevine@npca.org.